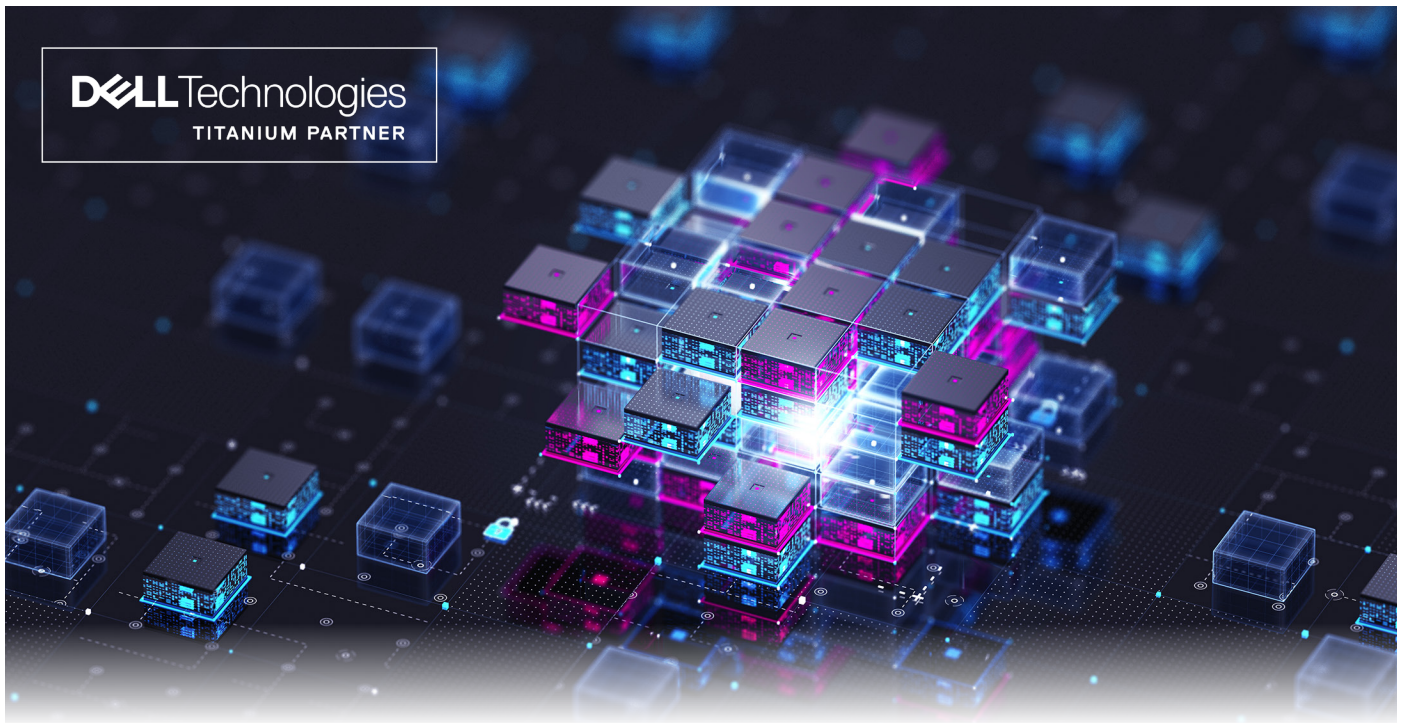


Archon Gateway



Industry's only CSfC gateway designed for enterprise

Many organizations following the National Security Agency (NSA) CSfC Compliance Program face the same barrier: the complexity of data center infrastructure.

Choosing from numerous NSA-validated components for computing, storage, networking, and firewalls — while ensuring interoperability, compliance with NSA compatibility packages, and scale — can be complex. Deployment, registration, and sustainment of an often one-off environment present further challenges.

Archon Gateway presents a simpler, faster path to CSfC. The Archon Gateway is a productized and validated CSfC architecture designed to scale to meet the demand of any size environment. Archon Gateway is a turn key solution that includes HW, SW, installation and cyber support — all in a single orderable SKU.

Contact TKTKTK to learn more about how CACI's CSfC-compliant capabilities make securing your edge simple, fast, and efficient.

www.caci.com/archon

The Archon Gateway difference

Time savings

Industry-vetted reference architectures, configuration automation, and standardized NSA registration documentation reduces the time to value for all implementations.

Over-the-air updates and certificate renewals

When paired with Archon Manager, our technology allows end users in the field to push updates, renew certificates, and wipe lost devices remotely to protect sensitive information.

Reduced risk

Archon Gateway's standardized architecture and wide market adoption ensures supportability and sustainment after delivered.

Virtualization for system resiliency

Archon Gateway leverages virtual instances of NIAP approved components to facilitated deployment, supportability, and minimize impact of component obsolescence

Features

- **Continuous monitoring with a custom-built dashboard:**
Archon Gateway supports Archon Director by providing NSA CSfC-compliance with continuous monitoring that combines logs, NetFlow, connection status, and alerts on a custom-built dashboard exportable to the enterprise SIEM environments.
- **Simplified ordering and support:**
Archon Gateway makes CSfC more accessible by providing a single part number for ordering and a single number to call for support.
- **Archon Gateway:** Comes in four sizes to meet the needs of any size enterprise.

Archon Gateway provides enterprise-class hardware and software and industry best practices for architecture design, automation, and security while meeting the NSA's stringent compliance requirements for CSfC environments.

About the Archon Suite

Eliminate barriers to NSA CSfC solutions with the industry's only gateway designed for CSfC. From next-generation devices to hardware and data services, CACI's Archon® Suite of CSfC capabilities makes securing your edge simple, fast, and efficient.

This material consists of CACI International Inc general capabilities information that does not contain controlled technical data as defined within the International Traffic in Arms Regulations (ITAR), Part 120.10, or Export Administration Regulations (EAR), Part 734.7-10. (PRR ID852)



EXPERTISE and TECHNOLOGY
for National Security

At CACI International Inc (NYSE: CACI), our 25,000 talented and dynamic employees are ever vigilant in delivering distinctive expertise and differentiated technology to meet our customers' greatest challenges in national security. We are a company of good character, relentless innovation, and long-standing excellence. Our culture drives our success and earns us recognition as a *Fortune* World's Most Admired Company. CACI is a member of the *Fortune* 1000 Largest Companies, the Russell 1000 Index, and the S&P MidCap 400 Index. For more information, visit us at www.caci.com.

Worldwide Headquarters

12021 Sunset Hills Road, Reston, VA 20190
703-841-7800

Visit our website at:

caci.com

Find Career Opportunities at:

careers.caci.com

Connect with us through social media:

