

**CACI Commercial Price List for
Common Bench-top Automatic Test System (CBATS)
Updated February 19, 2009**



Table of Contents

1. PRODUCT DESCRIPTION	2
2. ASSOCIATED SERVICES/SUPPORT	5
3. DELIVERY AND ACCEPTANCE	6
4. WARRANTY	6
5. PRICE LIST	7

1. Product Description

The CACI Common Bench-top Automatic Test System (CBATS) is a universal, full-featured test system packaged in a small footprint and capable of supporting diagnostic and acceptance test requirements for a wide assortment of avionics instrumentation, flight computers, and other electronic assemblies.

The CBATS is used in conjunction with unique Test Program Sets developed for each specific Unit Under Test (UUT). While the test system is common, each end item has unique interface requirements as well as its own test procedures that require distinct software and interface cables, not to mention other unique physical interfaces that may have to be addressed as a part of the Test Program Set.

There are two models of the CBATS (Model 101 and 201) currently fielded in various depot and back-shop environments and were selected based on the specific test requirements for the UUT.

The functional test capabilities of the two CBATS Models are described in the following pages. Table 1 provides a list of features of the Model 101 and Model 201 CBATS. Figure 1 and Figure 2 highlight the components and accessories included as part of the CBATS Model 101 and Model 201, respectively.

Capability	Model 101	Model 201
PXI slot-0 Chassis Controller	✓	✓
Switching Capability (Signal and Power)	✓	✓
High-Speed Digital Multi-meter	✓	✓
Data Acquisition (16 Channels)	✓	✓
Programmable Voltage Outputs	✓	✓
Counter/Timer Functions	✓	✓
Programmable DC Outputs (8 channels)	✓	
Programmable DC Outputs (3 channels)		✓
Adjustable 400 HZ AC Power (Single Phase)	✓	✓
Synchro Outputs (115 VAC Ref)	✓	
Synchro Outputs (26 VAC Ref)		✓
High-Speed Digitizer (Oscilloscope)		✓
Fixed +28 VDC Power		✓
Multiple External USB expansion ports	✓	✓
Multiple External USB expansion ports	✓	✓
Automated Self-test software and hardware adapters	✓	✓
Calibration software	✓	✓

Table 1. CBATS Functional Test Capabilities

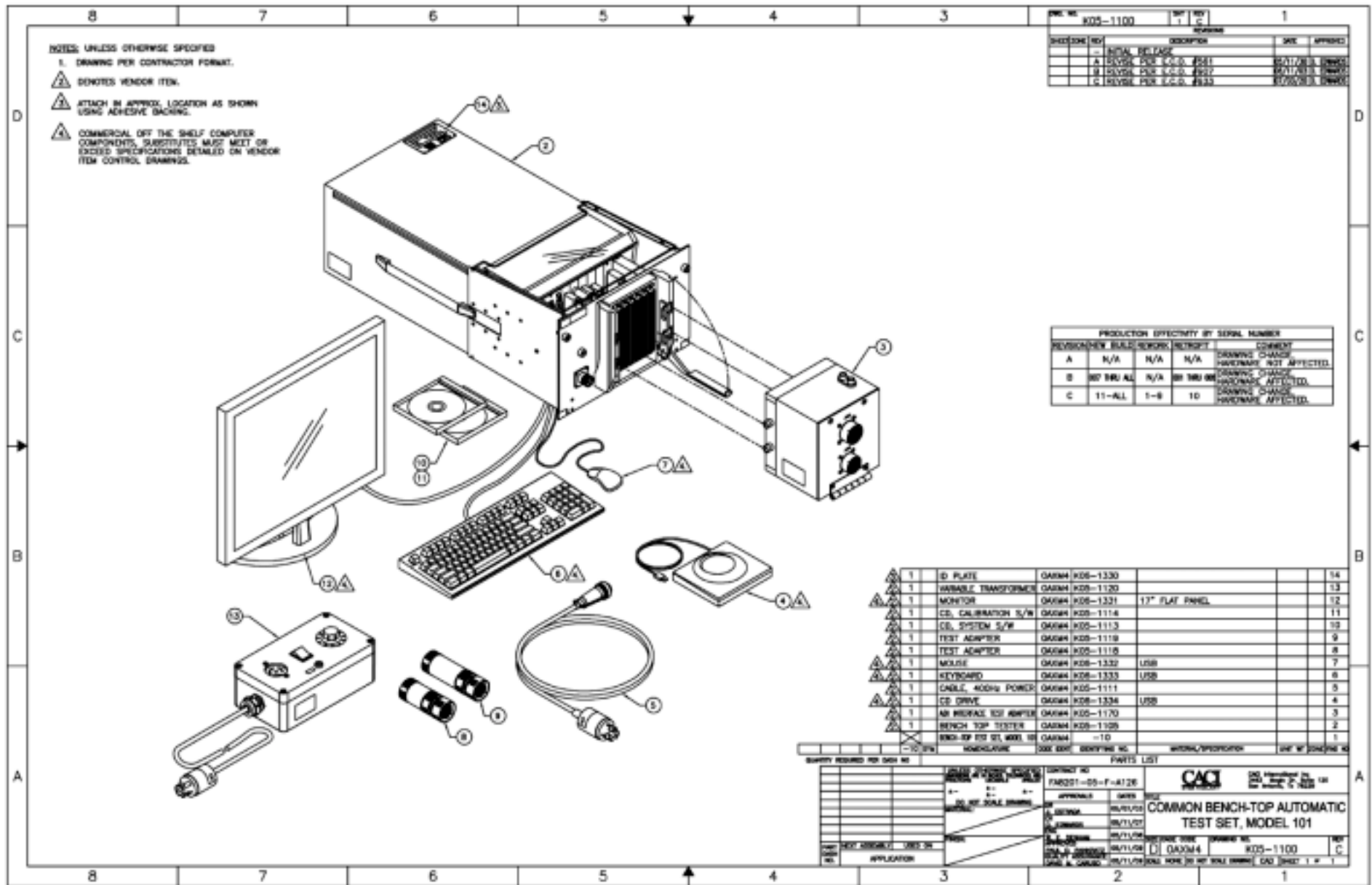


Figure 1. CBATS Model 101 and Included Accessories

2. Service/Support

Included Services

As a part of each product sale, CACI will provide technical support telephonically or by email as provided for below in Section 5 (Points of Contact) for 60 days after delivery of a unit. This is intended primarily as a service to our customers to assist in resolving any issues with making the unit fully operational and ensure proper systems installations.

Optional Support

Training

As an additional service option, CACI can provide on-site training on the use and maintenance of the CBATS and associated TPS. The following topics and instructions are contained in the syllabus for standard CBATS training. Additional training criteria can be added and priced upon customer request.

- Test System Set-up
- General Care and Cleaning/Preventive Maintenance Topics
- Loading and updating System and Test Program Set Software
- Configuration on User Accounts
- Common Repair and Maintenance
- CBATS Self-test and Calibration
- TPS Operation (Functional and Diagnostics)
- TPS Self-test (As applicable)
- Documentation Review

Standard training assumes availability of a customer-owned CBATS along with any necessary TPS and calibration equipment. Customer on-site training is intended for groups of up to 8 individuals at a time and includes instructional hands-on training with customer equipment.

Training on CBATS equipment is structured to fit within an eight hour day at the customer site and is normally conducted by both a CACI CBATS Hardware and Software Engineer. Specific travel costs are based on actual travel expenses incurred and the per-hour Labor Rates identified in Table 2 below. All labor hours associated with travel to and from a customer site are billed at the labor rates included in Table 2.

Training requests should be submitted a minimum of three weeks prior to the actual training delivery date desired to allow schedule coordination.

Optional Product Repair

CACI can provide an optional maintenance repair support program for all CBATS units sold upon request. This product repair support will be quoted on a time and material quote basis for each unit dependent on the labor and material required to complete the

necessary repair actions after the item is returned to CACI for a serviceability evaluation. A detailed estimate will be provided to include material costs and labor category costs based on the rates established in Section 6 (Price List) associated with repair actions necessary. Customer bears the costs for of all shipping and handling fees incurred. Mode of shipment will be at the customer's option.

Test Program Set Development

CACI also provides CBATS TPS development services. Software and hardware deliverables and documentation can be tailored to fit the customer's requirements. Pricing will be based on the test complexity for each UUT, and CACI will provide price quotes upon request.

3. Delivery and Acceptance

CACI applies the following criteria for acceptance of the CBATS and any associated TPS products as a part of the standard pricing.

CACI assumes appropriate facilities and customer furnished items as applicable will be available to support acceptance testing. Acceptance testing will be completed by the customer upon receipt of the test system and includes the following criteria –

- Successful inventory of all items
- Inspection of all items to ensure no external shipping damage occurred
- Successful execution of system self-test software
- Successful calibration of the test system

Acceptance testing of each TPS and other ancillary items (if included) will include inventory and visual inspection to ensure no shipping damage has occurred. If a TPS includes an automated self-test procedure, acceptance testing will also include successful execution of the fixture self-test software by the customer upon receipt of the TPS.

CBATS and TPS pricing described below include delivery to a CONUS location only. CACI will determine the most efficient means of delivering systems to their acceptance destination.

Standard delivery times will vary based on the contents of each order; however, typical delivery times are 16 weeks after receipt of order. Delivery to other than a CONUS location; expedited shipments; or other special shipping requests can be priced separately upon request.

4. Warranty

CACI warrants all workmanship for the CBATS and the associated TPS for one year from the acceptance date. During this timeframe, CACI will complete repairs for all workmanship-related defects without cost to the client. For all warranty determinations or support requests should be submitted either by telephone or by email using the contact

information provided in Section 5 (Points of Contact). Any unauthorized repair work by the client shall void the CACI workmanship warranty.

CACI will be responsible for addressing any damages occurring during shipping prior to acceptance. CACI will not be responsible for damages due to shipping or handling after acceptance. CACI will not be responsible for damages incurred when returning items to CACI for repair.

CACI will maintain purchasing records for all instrumentation in the CBATS and TPS fixtures as well as as-configured information for each delivered system. In the event of an instrument failure, CACI will provide purchasing history to the client as an aid in the warranty claim back to the instrument manufacturer.

5. Points of Contact

Information of a technical nature, to include warranty determinations shall be requested by either calling the telephone number below or submitting requests to the email address below –

- Telephone - 210-979-8989 ext 235
- Email address - ats_support@caci.com

For terms and conditions associated with purchasing items from this price list, or to place an order, please direct telephone calls or email correspondence number and address below -

- Telephone - 937-429-8278
- Email address - strautma@caci.com

6. Price List

The following labor rates will be utilized when providing quotes for software maintenance, training or hardware repair activities.

Labor Category	Hourly Labor Rate
Senior Hardware Engineer	\$105.00
Technician	\$85.00
Program Manager	\$123.00
Systems Engineer	\$115.00
Software Engineer	\$105.00

Table 2. Labor Rates

Pricing for the CBATS and each of the Test Program Sets currently hosted on the CBATS are included in Table 3.

	MFG Part Number	Part Number tested	Unit Pricing	Comments
	CAGE – 0AXM4			
CBATS Model 101 Test Set	K05-1100		\$ 70,339.00	NSN 4920-01-540-5520
F-16 ADI TPS <u>1</u> \	K06-1300	135070	\$ 3,097.00	
F-16 ADI TPS <u>1</u> \	K05-1240	77600000-3/-4	\$ 3,097.00	
C-130 ADI TPS <u>1</u> \	K06-1310	9819-08	\$ 3,379.00	
C-130 ADI TPS <u>1</u> \	K06-1315	139602-01-01	\$ 3,379.00	
C-130 ADI TPS <u>1</u> \	K05-1210	102379	\$ 3,379.00	
KC-135 AOA TPS (Requires K07-1000) <u>1</u> \	K07-1045	SLZ9486-3	\$ 1,907.00	
F-15 AOA TPS (Requires K07-1000) <u>1</u> \	K07-1040	SLZ9451	\$ 4,106.00	
AOA TPS Fixture <u>1</u> \	K07-1000	SLZ9486-3/SLZ9451	\$ 16,423.00	Does not include Wind Tunnel
BDHI (C-9, E-8, EC-18, T-43) <u>1</u> \	K08-1000	9813-13-01	\$ 19,130.00	
EGT Indicator TPS (C-130, C-5) <u>1</u> \	K08-1030	9A 375	\$ 3,995.00	
B-52 Anti-skid Control Shield TPS <u>1</u> \	K06-4000	40-173/1010400-1	\$ 3,379.00	
C-5 ADI TPS <u>1</u> \	K05-1200	1897690-4	\$ 3,097.00	
F-15 ADI TPS <u>1</u> \	K05-1220	112790/112790-1	\$ 3,097.00	
B-1 ADI TPS <u>1</u> \	K06-1320	156578-01-01	\$ 3,097.00	
B-1 ADI TPS <u>1</u> \	K06-1325	109090	\$ 3,097.00	
A-10 ADI TPS <u>1</u> \	K06-1305	123160-7	\$ 3,097.00	
Model 101 Calibration Adapter <u>1</u> \	K05-1130		\$ 2,411.00	
CBATS Model 201 Test Set	K06-1400		\$ 82,720.00	NSN 4920-01-559-3487
A-10 HSI TPS <u>2</u> \	K06-1475	126610-3	\$ 3,252.00	
C-130/T-38 HSI TPS <u>2</u> \	K06-1445	100524 (AQU-2/A)	\$ 3,805.00	
C-130/T-38 HSI TPS <u>2</u> \	K06-1450	522-1785-003 (AQU-2/A)	\$ 3,238.00	
C-5/C-141 HSI TPS <u>2</u> \	K06-1470	104500, 101000 (AQU-4/A)	\$ 3,805.00	
F-16 HSI TPS <u>2</u> \	K06-1455	126460	\$ 3,238.00	
F-16 HSI TPS <u>2</u> \	K06-1459	75500000-1	\$ 3,238.00	
F-16 HSI TPS <u>2</u> \	K06-1465	118500M	\$ 3,238.00	
Model 201 Calibration Adapter <u>2</u> \	K06-1440		\$ 2,411.00	

1\ Hosted on the CBATS Model 101 test system

2\ Hosted on the CBATS Model 201 test system

Table 3. CBATS and TPS Pricing